

**TOTAL CORPUS**

MILLIONS OF DOLLARS

1996	32.537
1997	38.053
1998	41.148
1999	42.457
2000	45.184
2001	45.205
2002	44.227
2003	48.389
2004	53.847
2005	52.412

**TOTAL GIFTS**

MILLIONS OF DOLLARS

1996	1.517
1997	1.587
1998	.924
1999	1.679
2000	1.587
2001	1.031
2002	1.321
2003	0.885
2004	2.575
2005	1.255

**EARNINGS PAID \***

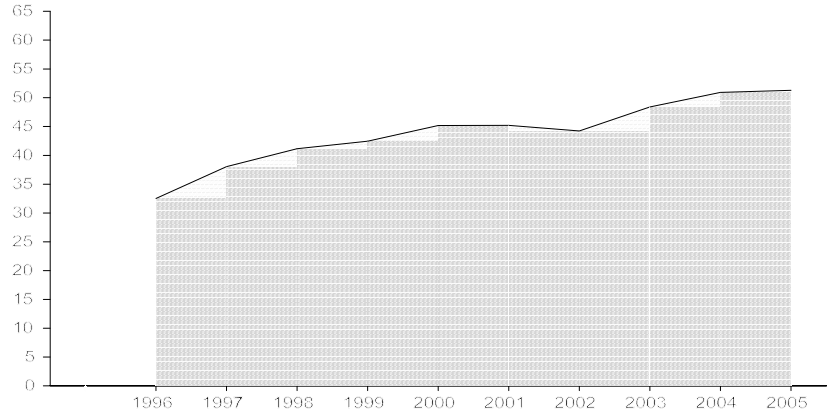
MILLIONS OF DOLLARS

1996	1.192
1997	1.281
1998	1.286
1999	1.316
2000	1.400
2001	1.400
2002	1.365
2003	1.377
2004	1.401
2005	1.813

\* Numbers do not include the earnings reinvested in the various endowments in accordance with trust agreements and/or agency instructions. Earnings reinvested for 2005 totaled \$338,884 for a total of \$1,837,444 in net earnings.

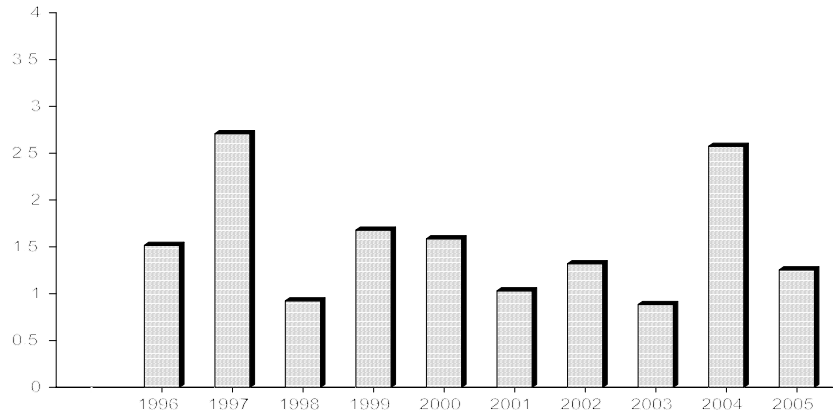
**TEN-YEAR GROWTH OF CORPUS**

GROWTH/INCOME, SEGREGATED, AND TOTAL RETURN NET ASSETS



**TEN-YEAR COMPARISON OF GIFTS**

GROWTH/INCOME, SEGREGATED, AND TOTAL RETURN



**TEN-YEAR COMPARISON OF EARNINGS PAID TO AGENCIES**

GROWTH/INCOME AND TOTAL RETURN

